

# Art & Furniture Repair

**(905) 856-4948**

**350 Woodbridge Avenue  
Woodbridge, ON L4L 3K8**

## Vintage Estates



Matching window available



**Taking Affordable Luxury to the Next Level**

- Plywood box construction
- Inset doors and drawers
- Backer plate drawer fronts
- Soft closing door mechanisms
- Solid wood drawers

26

## Sanibel



- Plywood box construction
- Multi-step hand detailed finish
- Contrasting Glaze
- Full Overlay doors and drawers
- Soft Close Door Mechanisms

- Easy assembly using wood glue and screwdriver
- Typical lead time: 7-10 business days

29

## Georgetown Collection



Up glaze doors  
are  
self assembled

- Extended selection of colours allow for high end design without the high end price
- Easy assembly using wood glue and screwdriver
- Typical lead time: 7-10 business days

19

## Halston



Matching V.



**Value and Quality in Maple Kitchens**

- Optional dovetail drawer box construction
- Easy assembly using wood glue and screwdriver
- Typical lead time: 7-10 business days

box construction  
ers and drawers  
bbled, multi-step finish  
ood drawers  
al self closing drawers slides

## Tuscany S



- Adjustable concealed cup hinges
- Doors are pre-hung on face frame for easy installation
- Easy assembly using wood glue and screwdriver
- Typical lead time: 7-10 business days

inside details

# Wellington Elite



- All wood construction!
- Solid maple face frame and drawer fronts!
- Half overlay maple veneer flat panel door
- 1/2" plywood box with real wood veneer
- 5/8" plywood full depth shelf with real wood veneer
- Solid wood dovetailed drawer boxes

**CARB CERTIFIED**

- Full extension, soft-close undermount drawer slides
- Adjustable concealed cup hinges
- Light Toffee finish

# Manchester Elite



*Matching vanities available*



- All wood construction - No particle board!
- Solid oak face frame, doors and drawer fronts!
- Half overlay solid oak raised panel door
- 1/2" plywood cabinet box with real wood veneer
- 5/8" plywood full depth shelf with real wood veneer
- Solid wood dovetailed drawer boxes

**CARB CERTIFIED**

- Full extension, soft-close undermount drawer slides
- Adjustable concealed cup hinges
- Doors are pre-hung on face frames for easy installation
- Easy assembly using wood glue and screwdriver
- Golden Oak finish

# Annapolis Elite



- All wood construction - No particle board!
- Solid maple face frame, doors and drawer fronts
- Full overlay solid maple raised panel doors
- 1/2" plywood box with real wood veneer
- 5/8" plywood full depth shelf with real wood veneer
- Solid wood dovetailed drawer boxes

**CARB CERTIFIED**

- Full extension, soft-close undermount drawer slides
- Adjustable concealed cup hinges
- Doors are pre-hung on face frame for easy installation
- Easy assembly using wood glue and screwdriver
- Cherry finish

# Windham Collection



**Coming mid-November 2011**

- All wood construction
- Solid birch face frame
- Full overlay doors and drawer fronts
- 1/2" plywood box with natural finished interiors
- 5/8" plywood full depth shelf
- 5/8" dovetail solid wood drawer box

- **15" deep wall cabinets standard**
- Undermount soft-close full extension drawer slides
- Easy assembly using wood glue and screwdriver
- Painted white finish

# Canterbury Series



Harvest Maple

- All wood construction - No particle board!
- Solid Maple face frame, doors and drawer fronts!
- Full overlay solid Maple raised panel door with applied moulding
- 1/2" plywood box with real wood veneer
- 5/8" plywood shelf with real wood veneer
- Solid wood dovetailed drawer boxes
- Full extension, soft-close undermount drawer slides

*Matching vanities available*

**CARB CERTIFIED**



Brandywine

- Adjustable concealed cup hinges
- 3 finishes available, Brandywine, Antique White, Harvest Maple



Antique White

# Tuscany Series



**CARB CERTIFIED**

- All wood construction - No particle board!
- Solid Maple face frame, doors and drawer fronts!
- Full overlay solid Maple raised panel door with glazed rope moulding
- 1/2" plywood box with real wood veneer
- 5/8" plywood full depth shelf with real wood veneer
- Solid wood dovetailed drawer boxes

- 3/4 extension self closing drawer slides
- Adjustable concealed cup hinges
- Doors are pre-hung on face frame for easy installation
- Easy assembly using wood glue and screwdriver
- Cinnamon finish

# New England



*Matching vanities available*



**CARB CERTIFIED**

- All wood construction!
- Solid Maple face frame and drawer fronts!
- Full overlay, flat panel doors. Solid Maple stiles & rails.
- 1/2" plywood box with real wood veneer
- 5/8" plywood full depth shelf with real wood veneer
- Dovetail, solid wood drawer boxes
- 3/4 extension, epoxy undermount drawer slides

- Adjustable concealed cup hinges
- Doors are pre-hung on face frame for easy installation
- Easy assembly using wood glue and screwdriver
- Cinnamon finish

# Scottsdale Series



*Matching vanities available*



- All wood construction - No particle board!
- Solid maple face frame, doors and drawer fronts!
- Half overlay solid maple raised panel door
- 1/2" plywood box with real wood veneer
- 5/8" plywood shelf with real wood veneer
- Butt-jointed, plywood drawer boxes
- 3/4 extension, epoxy side mount drawer slides

**CARB CERTIFIED**

- Adjustable concealed cup hinges
- Doors are pre-hung on face frame for easy installation
- Easy assembly using wood glue and screwdriver
- Walnut finish

# Portsmouth Series



- All wood construction - No particle board!
- Solid maple face frame, doors and drawer fronts!
- Half overlay solid maple raised panel door
- 1/2" plywood box with real wood veneer
- 5/8" plywood shelf with real wood veneer
- Butt-jointed, plywood drawer boxes
- 3/4 extension, epoxy side mount drawer slides

**CARB CERTIFIED**

- Adjustable concealed cup hinges
- Doors are pre-hung on face frame for easy installation
- Easy assembly using wood glue and screwdriver
- Ginger finish

# Cambridge Series



Double-Tiered  
Cutlery Drawer



Tableware Tray

Accessorize with  
a **Drawer  
Insert**



- All wood construction - No particle board!
- Solid walnut face frame and drawer fronts
- Full overlay walnut raised panel doors with mortise and tenon construction
- 1/2" plywood box with natural finished interior
- Drawer boxes are pre-assembled
- 3/4" plywood shelf with real wood veneer
- Soft closing adjustable concealed cup hinges

- 1/2" dovetail solid wood drawer boxes
- Undermount full extension soft-close drawer slides
- Doors pre-hung for easy installation
- Easy assembly using glue and brads
- Mocha Brown Glaze finish

# Warwick Series



**RED-A-SHELF®**

*Accessorize with  
a Pullout  
Base  
Organizer*



- All wood construction - No particle board!
- Solid walnut face frame and drawer fronts
- Full overlay walnut raised panel doors with mortise and tenon construction
- 1/2" plywood box with natural finished interior
- Drawer boxes are pre-assembled
- 3/4" plywood shelf with real wood veneer
- soft closing adjustable concealed cup hinges

- 1/2" dovetail solid wood drawer boxes
- Undermount full extension soft-close drawer slides
- Doors pre-hung for easy installation
- Easy assembly using glue and brads
- Cherry finish

# Espresso Series



*Matching vanities available*

*Accessorize with an  
Under-Counter Appliance Lift*



- Solid walnut face frame
- Full overlay MDF slab doors and drawer fronts with walnut veneer
- 1/2" plywood box with natural finished interior
- Dovetail drawer boxes are pre-assembled
- 3/4" plywood shelf with real wood veneer
- Soft closing adjustable concealed cup hinges



- Undermount full extension soft-close drawer slides
- Doors pre-hung for easy installation
- Easy assembly using glue and brads
- Espresso finish

# Bristol Series



*Matching vanities available*



*Accessorize with  
a Slide Out  
Blind Corner Unit!*



- All wood construction - No particle board!
- Solid birch face frame and drawer fronts
- Full overlay birch raised panel doors with mortise and tenon construction
- 1/2" plywood box with natural finished interior
- Drawer boxes are pre-assembled
- 3/4" plywood shelf with real wood veneer
- Soft closing adjustable concealed cup hinges

- 1/2" dovetail solid wood drawer boxes
- Undermount full extension soft-close drawer slides
- Doors pre-hung for easy installation
- Easy assembly using glue and brads
- Toffee finish

# Elegant Birch



*Matching vanities available*



*Accessorize with  
Decorative Hardware!*



- All wood construction
- Solid birch face frame
- Full overlay doors & drawer fronts with solid birch stiles and rails
- 1/2" plywood box with finished interior
- Drawer boxes are pre-assembled
- 3/4" plywood shelf with real wood veneer
- Soft closing adjustable concealed cup hinges

- 1/2" dovetail solid wood drawer boxes
- Undermount soft-close drawer slides
- Doors pre-hung for easy installation
- Easy assembly using glue and brads
- Cinnamon satin finish

# Cascade



*Accessorize with a Towel Bar Rack*



- Frameless plywood box
- White thermofoil raised panel doors and drawer fronts
- 3/4" Thick birch dovetail drawer box
- Full extension Soft Close undermount slides
- Cabinet is assemble with wooden dowels, glue and clamps

*Accessorize with a LED Puck Lighting*



# Jamestown Collection



*Matching vanities available*



- All wood construction
- Light stained alder
- Full Overlay
- Recessed Panel doors



**CARB CERTIFIED**



- Plywood sides, tops, bottoms and shelves
- Solid wood dovetail drawer box
- Full extension, soft closing, undermount drawer glides

# Hanover Collection



*Matching vanities available*



*Accessorize with  
Decorative Hardware!*



- All wood construction
- Dark brown stain on Basswood
- Full overlay
- Richly detailed solid raised panel doors with slab drawer fronts
- Solid wood dovetail drawer box & soft-close under-mount drawer slides available

**CARB CERTIFIED**

- Expanded selection of cabinets allow for high end design without the high end price.
- Easy assembly using wood glue and screwdriver

# Georgetown Collection



- All wood construction
- Cherry stain with dark glaze
- Full overlay
- Solid raised panel doors with matching drawer fronts
- Plywood sides, tops, bottoms and shelves
- Solid wood dovetail drawer boxes with full extension soft closing undermount drawer glides

**CARB CERTIFIED**

- Expanded selection of cabinets allow for high end design without the high end price.
- Easy assembly using wood glue and screwdriver

# Lexington Collection



*Matching vanities available*

*Accessorize with  
Wood Lazy Susan Drawer  
Systems !*



**CARB CERTIFIED**

- All wood construction
- Medium stained maple with a rich dark brown glaze
- Richly detailed solid raised panel doors with matching drawer fronts
- Euro style concealed hinges
- Plywood sides, tops, bottoms and shelves
- 3/4 extension epoxy undermount slide
- Upgrade to Soft-close undermount drawer slide
- Solid wood drawer box
- Expanded selection of cabinets allow for high end design without the high end price.
- Easy assembly using wood glue and screwdriver

# Wheaton Collection



*Matching vanities available*



*Accessorize with  
Decorative Hardware!*



**CARB CERTIFIED**

- All wood construction
- Cream painted maple with a light brown glaze
- Full overlay
- Solid raised panel doors with matching drawer fronts
- Plywood sides, tops, bottoms and shelves
- Solid wood dovetail drawer boxes with full extension soft closing undermount drawer slides
- Expanded selection of cabinets allow for high end design without the high end price.
- Easy assembly using wood glue and screwdriver

# Sturbridge Collection



*Matching vanities available*



*Accessorize with  
Decorative Hardware!*



- All wood construction
- Light stained red birch
- Full overlay
- Solid reversed raised panel doors with slab drawer fronts
- Plywood sides, tops, bottoms and shelves

**CARB CERTIFIED**

- Solid wood dovetail drawer boxes with soft closing under mount full extension drawer glides
- Expanded selection of cabinets allow for high end design without the high end price.
- Easy assembly using wood glue and screwdriver

# Rockport Collection



*Matching vanities available*



*Accessorize with  
Granite Sink Tops*



*Accessorize with  
Cultured Marble Top*



**CARB CERTIFIED**

- All wood construction
- Cider stained maple
- Full overlay
- Solid raised panel doors with matching drawer fronts
- Plywood sides, tops, bottoms and shelves
- Solid wood dovetail drawer boxes with full extension soft closing undermount drawer slides

- Expanded selection of cabinets allow for high end design without the high end price.
- Easy assembly using wood glue and screwdriver

# Grand Haven



*Matching vanities available*



**CARB CERTIFIED**

- Inset doors and drawers
- Dark brown stain on distressed maple
- Plywood box construction
- Soft closing door mechanisms
- Solid wood drawers

- Optional dovetail drawer box construction with soft closing drawers slides
- Easy assembly using wood glue and screwdriver

# Cambrian



*Matching vanities available*



- Plywood box construction
- Cherry stain with an autumn glaze on distressed maple
- Inset doors and drawers
- Solid wood drawers

**CARB CERTIFIED**

- Optional dovetail drawer box construction with soft closing drawers slides
- Easy assembly using wood glue and screwdriver
- Typical lead time: 12-15 business days
- Ships from: Tennessee & California

# Vintage Estates



*Matching vanities available*



***Taking Affordable Luxury to the Next Level***

**CARB CERTIFIED**

- Plywood box construction
- Inset doors and drawers
- Ginger finish with an autumn Glaze distressed maple
- Solid wood drawers

- Optional dovetail drawer box construction with soft closing drawers slides
- Easy assembly using wood glue and screwdriver

# Halston



*Matching vanities available*



- Plywood box construction
- Inset doors and drawers
- Light brown stain with an autumn glaze on distressed maple
- Solid wood drawers

**CARB CERTIFIED**

- Optional dovetail drawer box construction with soft closing drawers slides
- Easy assembly using wood glue and screwdriver

# Carmel



*Matching vanities available*



*Taking Oak Cabinets to New Heights*

**CARB CERTIFIED**

- Plywood box construction
- Antique oak stain with autumn glaze on distressed oak
- Inset doors and drawers
- Durable hand-detailed finish
- Solid wood drawers

- Optional dovetail drawer box construction with soft closing drawers slides
- Easy assembly using wood glue and screwdriver

# Sanibel



- Plywood box construction
- Painted cream finish with black accent glazing
- Full Overlay doors and drawers
- Soft Close Door Mechanisms

- Easy assembly using wood glue and screwdriver



Cambrian



Viola white



Sturbridge



Viola Toffee



Grand Haven



Tuscany



30 Lexington



Antique White

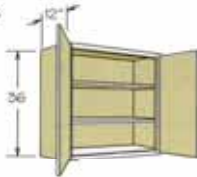
**Base Cabinets:** are 24" deep x 34-1/2" high; a standard 1-1/2" countertop makes a 36" high work surface, and come with a standard 4-1/2" toe kick space.

**Wall Cabinets:** have a 12" depth, with height options from 12" to 42". *Please Note; Cabinets shown are for reference only. Size, availability and specifications may differ with style.*

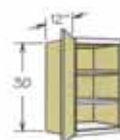
**Wall Cabinet**  
36" High, 1 Door  
W936  
W1236  
W1536  
W1836  
W2136



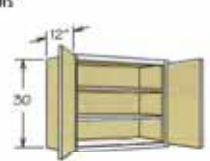
**Wall Cabinet**  
36" High, 2 Doors  
W2436  
W2736  
W3036  
W3336  
W3636



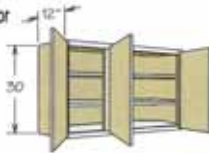
**Wall Cabinet**  
30" High, 1 Door  
W930  
W1230  
W1530  
W1830  
W2130



**Wall Cabinet**  
30" High, 2 Doors  
W2430  
W2730  
W3030  
W3330  
W3630



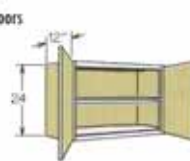
**Wall Cabinet**  
30" High, 3 Door  
W4230



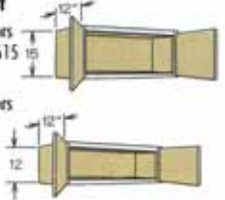
**Wall Cabinet**  
18" High, 2 Doors  
W3018  
W3318  
W3618



**Wall Cabinet**  
24" High, 2 Doors  
W3024



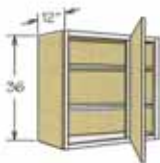
**Wall Cabinet**  
15" High, 2 Doors  
W3015  
W3615  
W3315



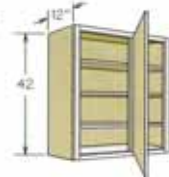
12" High, 2 Doors  
W3012  
W3612



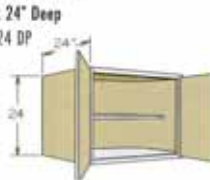
**Blind Wall**  
30" High, 1 Door  
WBC2730  
36" High, 1 Door  
WBC2736



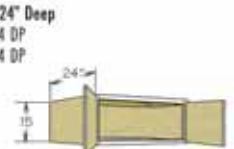
**Blind Wall**  
42" High, 1 Door  
WBC2742



**Refrigerator Wall**  
24" High x 24" Deep  
W3624 X 24 DP



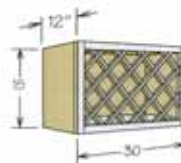
**Refrigerator Wall**  
15" High x 24" Deep  
W3315 X 24 DP  
W3615 X 24 DP



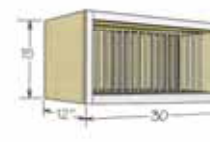
**Corner Wall**  
30" High  
WDC2430  
36" High  
WDC2436  
42" High  
WDC2442



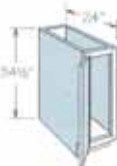
**Wine Rack Cabinet**  
WR3015



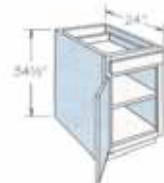
**Wall China Cabinet**  
PR3015



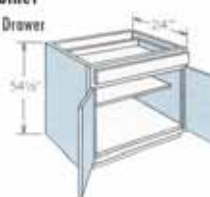
**Base Cabinet**  
No Drawer  
B09



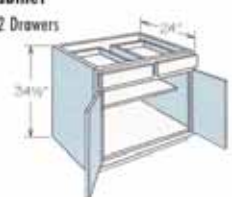
**Base Cabinet**  
1 Door, 1 Drawer  
B12  
B15  
B18  
B21



**Base Cabinet**  
2 Doors, 1 Drawer  
B24  
B27  
B30  
B33



**Base Cabinet**  
2 Doors, 2 Drawers  
B36  
B42



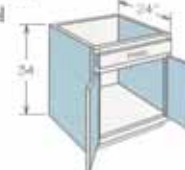
**Drawer Base**  
3 Drawers  
DB15 DB24  
DB18 DB30  
DB21



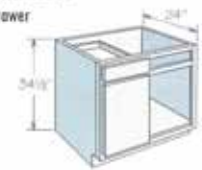
**Sink/Range Base**  
2 Doors, 2 Panels  
SB36  
SB42



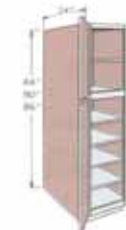
**Sink/Range Base**  
2 Doors, 1 Panel  
SB30  
SB33



**Blind Corner Base**  
1 Door, 1 Drawer  
BBC36



**Pantry Cabinet**  
24" Deep, 2 Doors  
with Adjustable Shelves  
WP1884  
WP1890  
WP1896



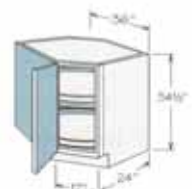
**Wall Pantry**  
24" Deep, 4 Doors  
with Adjustable Shelves  
WP2484  
WP2490  
WP2496



**Susan Base**  
LSB36



**Corner Base**  
DCB36





**Art & Furniture Repair  
350 Woodbridge Avenue  
Woodbridge, ON L4L 3K8  
(905) 856-4948**